

# Kiwi Ingenuity – Volunteers at Work

by Kerry Payne - April 2011

Kiwi and mice don't mix for a number of reasons so the mice on the mountain have to go and getting rid of them has involved some new kiwi ingenuity.

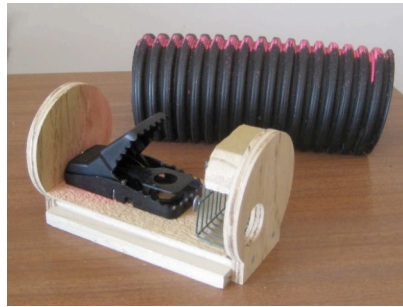
Until now mouse traps laid on the mountain have been protected by a simple cover made from a piece of drain coil. This type of trap is however a curiosity for nosy kiwi, who run the risk of springing it and getting their inquisitive and sensitive beaks caught. With an ever increasing kiwi population on the mountain the likelihood of such happenings has increased to an extent where better risk mitigation is clearly necessary.

Two of our experienced and long serving volunteers, Bryan Jenkin and Warwick Gatland looked at the problem and have now devised a sophisticated enhancement to the existing trap enclosure that will still prove attractive to mice but will deter our nosy nocturnal ratite friends.

A band of volunteers is busily engaged constructing 3000 new trap enclosures to the Jenkin-Gatland design. Under the sponsorship and direction of Bill and Jan Mathers they have set up a sophisticated production line in the Mathers garage, churning out up to 500 enclosures per day. It's been truly amazing to watch them in action, each person completing a minor part of the trap component before passing it to the next worker on the line.

Outside in the sunny garden another team is busy making up recycled tracking cards for use in tracking tunnels and in another part of the garage Matt is busy making up bird carry boxes for the nest reintroduction project.

With a light filled and jolly working environment in pleasant country garden surroundings, and Jan providing fortification by way of delicious home baked muffins and coffee, there is no shortage of labourers willing to work on these projects! A great example of the way volunteerism works for Maungatautari.



New trap enclosure design detail



Bob Vercoe assembling trap enclosure



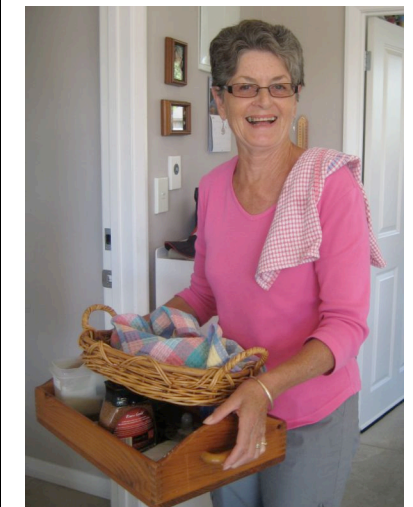
Mike Short, Bill Mathers & Bob Vercoe



Bryan Jenkin, Ray Nicholson, Tony Rolley & Warwick Gatland on the production line



Tony Rolley, Bryan Jenkin, Ray Nicholson & Warwick Gatland pause for the camera



Muffin lady Jan Mathers



Jim McKnight, Nathan Watson, Neil Smith, David Welch & Rosemary Lugton recycling tracking cards



Matt Harms building bird carry boxes